

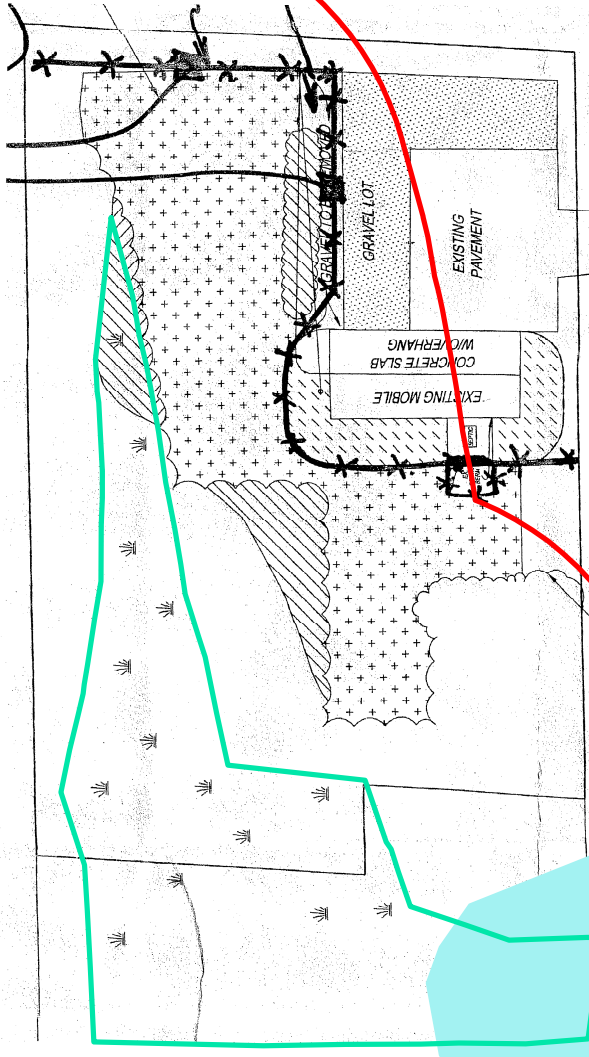
2008 Restoration

Parcel 145750-0005



The Melki property (PIN 1457500005) is 2.3 acres. It is mostly within a defined sensitive area and a Category 1 wetland.

The property is in the May Creek Basin. The wetland, a regional stormwater facility, is the headwaters of May Creek Tributary 0291A, which parallels 164th Ave SE.



100

195

Data Sources

King County GIS Parcel
Deed of Conservation Easement (2013)
Code Enforcement/Restoration (2008)

Legend

- Wetland boundary
- Parcel 1457500005



This & Other Maps
The Atlas Program
MySpatialHome.org