

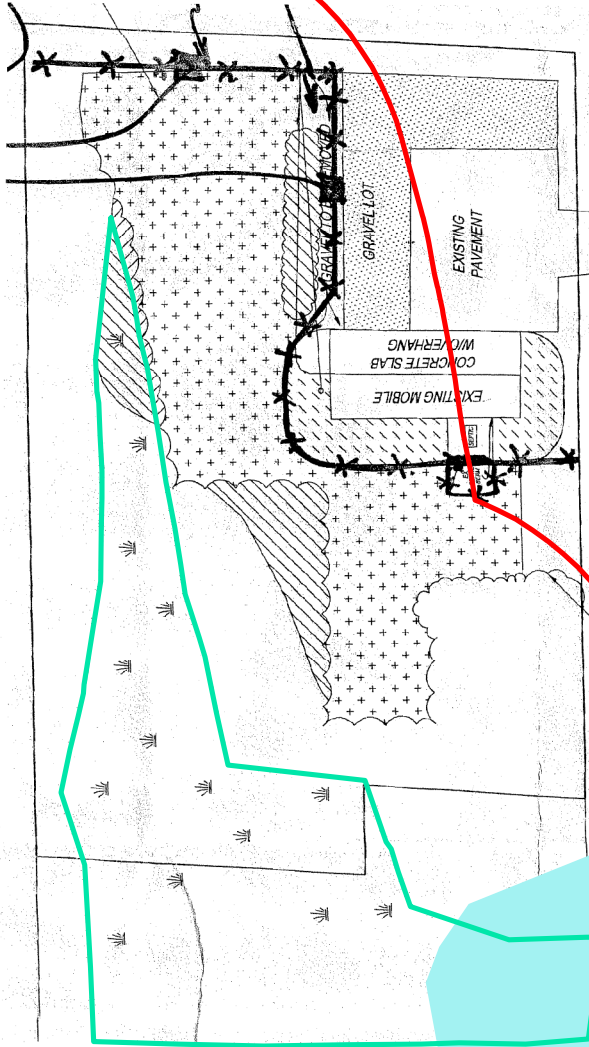
# 2008 Restoration

Parcel 145750-0005



The Melki property (PIN 1457500005) is 2.3 acres. It is mostly within a defined sensitive area and a Category 1 wetland.

The property is in the May Creek Basin. The wetland, a regional stormwater facility, is the headwaters of May Creek Tributary 0291A, which parallels 164th Ave SE.



100

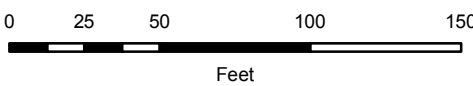
195

**Data Sources**

King County GIS Parcel  
Deed of Conservation Easement (2013)  
Code Enforcement/Restoration (2008)

**Legend**

- Wetland boundary
- Parcel 1457500005



This & Other Maps  
**The Atlas Program**  
MySpatialHome.org